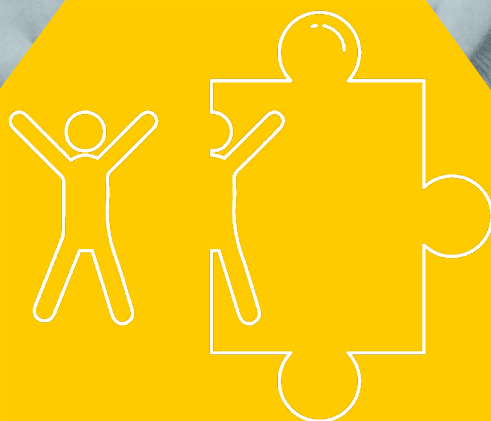


# CATCH22 EDUCATION

AN OVERVIEW OF OUR  
ALTERNATIVE AND SPECIAL  
EDUCATION PROVISIONS

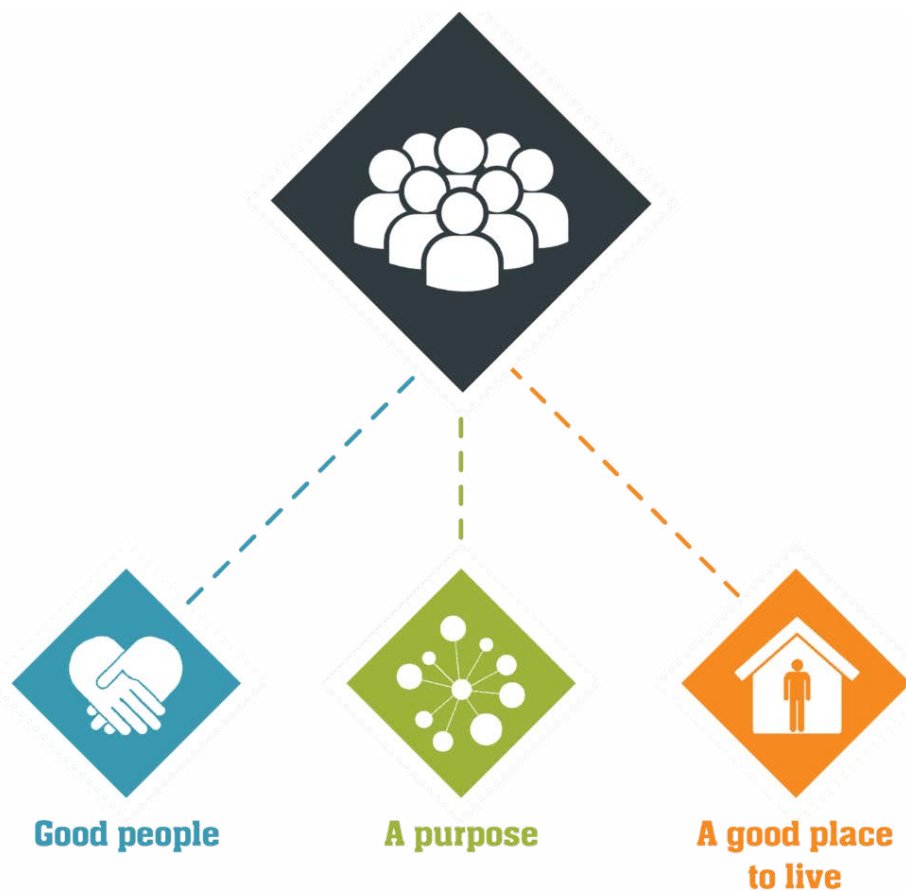


catch  
22

# CATCH22

FOR OVER 200 YEARS CATCH22 HAS DESIGNED AND DELIVERED SERVICES THAT BUILD RESILIENCE AND ASPIRATION IN PEOPLE AND COMMUNITIES.

Our approach is based on the **3Ps**. We believe people can thrive when they have:



Catch22 provides alternative and special full-time and part-time education for young people displaying a wide range of complex barriers to education, including those who are excluded or at risk of exclusion and those with Social, Emotional and Mental Health (SEMH) needs or Special Educational Needs (SEN).

WITH AN EMPHASIS ON TRANSITION AND RE-ENGAGEMENT BACK INTO MAINSTREAM EDUCATION OR EMPLOYMENT, OUR FOUR INDEPENDENT SCHOOLS SUPPORT VULNERABLE YOUNG PEOPLE WITH CHALLENGING BEHAVIOURS TO REALISE THEIR FULL POTENTIAL, ACHIEVE ACADEMIC AND VOCATIONAL TARGETS, AND PROGRESS INTO EDUCATION, TRAINING AND EMPLOYMENT.

# INTRODUCTION

---

I'm proud to be the Strategic Director for Justice & Education and lead on Catch22's Education offer. Catch22 provides public services right across the welfare cycle, from child exploitation to apprenticeships and youth justice to care leavers. Our vast expertise therefore perfectly positions us to deliver Special and Alternative Education to children and young people for whom mainstream education is not suitable.

We believe that all young people deserve a high-quality and supportive education that is specific to their needs. Our Include schools are inclusive at their very core. They move away from the traditional mainstream model of learning and, instead, deliver teaching via a small and supportive environment designed to meet the needs of individual pupils and encourage learners to re-engage with education.

Our staff teams, equipped with specialist skills, knowledge and understanding, support pupils to feel safe, stay healthy, enjoy learning and, ultimately, progress into sustained positive destinations. Whether pupils transition back into a mainstream school, further education, employment or training, our schools give students the tools they need to positively contribute to society and lead a happy and fulfilling life."



**Lisa Smitherman, Strategic Director  
(Justice & Education)**



# OUR IMPACT

In 2023-2024, our schools achieved the following outcomes:

**237**

students  
supported

**84%**

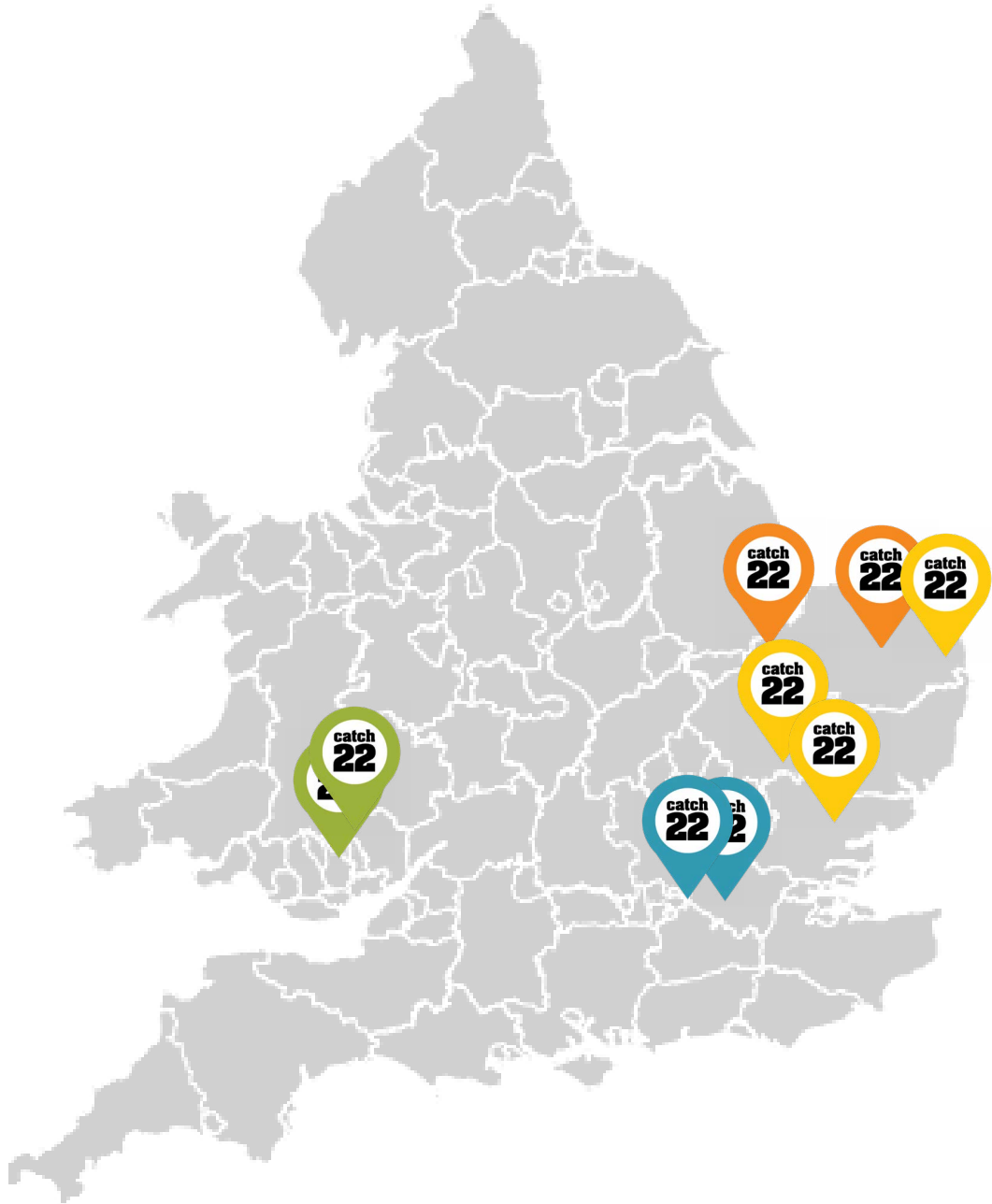
of leavers went  
on to a positive  
destination

**100%**

of schools  
inspected by  
Ofsted graded  
'GOOD'



# OUR SERVICES



## **Include Norfolk**

Norwich

Kings Lynn

Cloud 22 (online provision)



## **Include Suffolk**

Ipswich

Bury St Edmunds

Lowestoft



## **Include Wales**

Newport

Ebbw Vale



## **Include London**

London, Freston Road

# INCLUDE SUFFOLK

Include Suffolk is an Ofsted GOOD independent school located across **3 sites in Ipswich, Lowestoft and Bury St Edmunds**. The school provides a temporary, full-time, specialist education for children **aged 5-11 years** old whose needs cannot be met by their mainstream setting.

Some students referred to Include Suffolk may struggle with anxiety, low self-esteem and confidence; others may have learning difficulties such as ASD, Asperger's, ADHD or attachment disorders. Include Suffolk's mission, over 2-3 terms, is to support students to increase their capacity and passion for learning, enabling them to return to a stable mainstream or specialist placement.

Each school site has up to three classrooms, all consisting of a maximum of eight pupils in each class, facilitated by a teacher and two Teaching Assistants. This enables students to receive personalised, 1-to-1 support from staff. Include Suffolk offers the full National Curriculum alongside nurture sessions and extra therapeutic interventions, bespoke to the specific needs of individual students. In this way, the school's timetable is designed to help children not only with their academic progress but also to address their social and emotional needs.

Teachers and Advocates at Include Suffolk specialise in understanding and addressing the cause behind challenging behaviours and advocates work with children on their emotional development using the Boxall Profile.

At Catch 22 Include Suffolk Primary School, we are committed to delivering a bespoke and ambitious curriculum, tailored to meet the diverse needs of our pupils. We understand that education is not just about imparting knowledge, but about nurturing people, helping them to find their place in the world, and instilling in them a sense of purpose. We offer an engaging learning experience that sparks curiosity and fosters a love of learning, setting a strong foundation for lifelong education. Our dedicated and passionate staff strive to make our school a place where every pupil feels valued, inspired and equipped to pursue their most ambitious dreams.

In 2023-24:

**85%**

pupils following our Read Write Inc (RWI) Fresh Start reading intervention made progress.

**95%**

pupils made progress in reading overall.

I can't thank you all enough for absolutely everything for myself and more importantly, R. Before he came to your school, he was constantly excluded, segregated from other children and not treated nicely generally, he never done any school work and would try to get sent home every day. In the 9 months he's been with you, you've helped him grow and expand on the skills he had. He now wakes up every morning wanting to go to school, he engages and does his work, he comes home happy and that's because of all of you."

– Parent, 2024

**Ofsted**  
Good  
Provider



Visit Include Suffolk's school website at  
[www.includesuffolk.org.uk](http://www.includesuffolk.org.uk)

**include**  
SCHOOL  
SUFFOLK **catch  
22**

# INCLUDE LONDON

Include London is an independent school located in **Ladbroke Grove in West London**. Include London provides full-time, alternative, secondary education learners in **years 9, 10, 11 and 12** who are unable to access mainstream secondary education.

Include London works with students who have complex high needs and for whom mainstream environments do not provide the right fit. Pupils who attend Include London have a range of social, emotional and mental health (SEMH) needs, as well as those who have been, or are at risk of becoming, excluded. The school takes a young person-centred, holistic approach to education, with a focus on unblocking students' barriers to learning and releasing their potential, such that they can **progress to and succeed in further education, employment or training**.

Include London offers small class sizes of no more than 6 students. Its timetable, in which young people study the core curriculum of English, Maths, Science, ICT, Personal and Social Education, PE Citizenship and Music is supplemented with the option to study additional vocational or creative subjects. The curriculum is delivered by qualified teachers, with support from teaching assistants, to ensure every young person can access its broad and balanced timetable.

In delivering its formal education offer, Include London also fosters a trauma-informed, resolution-focussed and restorative learning environment in which students are valued, supported, listened to and understood. This is enhanced by a variety of therapies on site delivered in groups or 1:1 by specialist therapists.

In 2023-24, **100%** of English/English Language entries achieved a qualification





Visit Include London's school website at  
[www.include-london.org.uk](http://www.include-london.org.uk)

In 2023-24, **75%** of Maths entries  
achieved a qualification

# INCLUDE WALES

Include Wales is an Independent School registered with the Welsh Assembly Government, located across two sites in Newport and Ebbw Vale. It provides full-time, alternative education for young people, most of whom have Social, Emotional, and/or Mental Health Needs (SEMH). Include Wales is registered for 42 places at **Early Years, Key Stage 1, Key Stage 2 and Key Stage 3**.

Include Wales's mission is for every child to become the very best version of themselves that they can be. Whilst the pupils who attend Include Wales initially on admission may present with behavioural issues, the school aims to support students to return to a stable mainstream or specialist placement. Include Wales fosters in its students a renewed confidence in their ability, which acts as a steppingstone to a permanent school placement and fulfilling academic career.

Include Wales offers pupils the Curriculum for Wales, alongside **nurture sessions** and **extra academic interventions** provided by our staff team trained in both behavioural and additional learning needs teaching. The school's timetable is designed to help children not only with their academic progress but also to address their social and emotional needs.

Include Wales prides itself on its excellent communication with pupils, parents/carers and partnerships to ensure that its students receive the very best support, both inside and outside of the classroom.

**In 2023-24:**

Students at Include Wales achieved a

**87%**

attendance rate.

**85%**

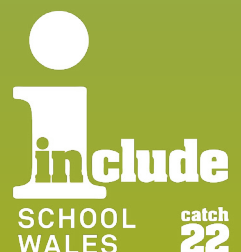
pupils made progress in reading overall.

“Thank you all for everything you have done and having the time and patience to work with my son. My son came to you as an angry 4 year old. He was aggressive, violent and hated women. I am proud to say that he is now a completely different child thanks to the time and effort you have given him.”

**- Parent**



Visit Include Wales' school website at  
[www.includewales.org.uk](http://www.includewales.org.uk)



# INCLUDE NORFOLK

Include Norfolk is an Ofsted GOOD independent school located across **2 sites in Norwich and Kings Lynn**. The school caters for **year 9, 10 and 11** pupils who have had difficulties learning within a mainstream school setting. Include Norfolk also offers a remote provision, Cloud22, to students for whom education is better delivered online.

The majority of pupils referred to Include Norfolk have Social, Emotional and/or Mental Health (SEMH) needs, and some may also require specialist support with Special Educational Needs such as Attention Deficit (ADHD) or Autism Spectrum Disorder (ASD), whether they are diagnosed or not.

Include Norfolk aims to support pupils to leave with 5 or more level 2 qualifications so that they can achieve in a post-16 placement. Many leavers progress on to City College Norwich (CCN) and the College of West Anglia (CoWA). Include Norfolk also offers vocational placements for its young people who wish to acquire meaningful skills.

Staff at Include Norfolk are skilled in building and maintaining positive relationships. In doing so, they support pupils in raising their self-esteem, aspiration and confidence. The staff teams take a trauma-informed and attachment-aware approach, working to understand each individual pupil and cater to their specific needs. Include Norfolk also has a full-time counsellor and dedicated pastoral staff so that pupils always have the right help and support, both in and out of the classroom.



In 2023-24:

# 100%

of English and Maths entries achieved a qualification



The progress that pupils make at the school relative to their starting positions both academically and pastorally is massive. There is a real robust and effective methodology in place to support pupil progression across all areas.”

- Ofsted 2023



Visit Include Norfolk's school website at [www.includenorfolk.org.uk](http://www.includenorfolk.org.uk)



# CLOUD 22

Cloud 22 is the first fully online and remote school for students aged **14-16 years old** in **Norfolk**, delivered by Include School Norfolk.

Cloud 22 was created to deliver a complete and comprehensive curriculum, comprising live lessons and holistic pastoral and therapeutic support, to hard-to-reach learners in a way which works for them.

The aim of the Cloud 22 provision is to re-engage learners who have either a history of persistent non-attendance, behavioural issues or significant social, emotional or mental health (SEMH) barriers that prevent them from attending in-person provision. Many of our students have been out of education for several years.

Cloud 22 supports the hardest-to-reach and most vulnerable learners into full-time, virtual learning by digitally delivering the support, opportunities and qualifications that allow them to progress into positive post-16 destinations, just as we do for their on-site and mainstream peers.

In 2023-24:

# 93%

of students achieved a Maths qualification

# 100%

pupils made progress in reading overall.

Students achieved a

# 79%

attendance rate



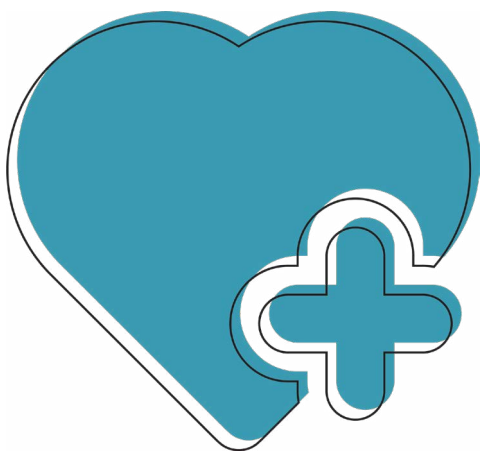




“

As parents, we have noticed a huge improvement thanks to your guys. After years of no education [our daughter] now has a purpose to get up and is focused and engaging...I'm most thankful and grateful for all the staff at Catch22. You guys are bringing [our daughter] back to life.”

- Parent 2022



catch  
22









catch  
**22**

## Contact us

Drop us an email at:  
[education@catch-22.org.uk](mailto:education@catch-22.org.uk)

Find out more:  
If you'd like to find  
out more about  
Catch22's Education  
provision, please  
visit our website  
below.



**[catch-22.org.uk](http://catch-22.org.uk)**

Catch22 charity limited. Registered charity no. 1124127  
Company limited by guarantee. Company no. 06577534

