

catch
22



Risk and Resilience Services

Supporting young people at
risk of exploitation





Catch22 provides services that support children who are at risk of exploitation or missing from home.

We work in Merseyside, West Midlands, Merton, Stoke and Staffordshire and Derbyshire, helping some of the most vulnerable children get their lives back on track.

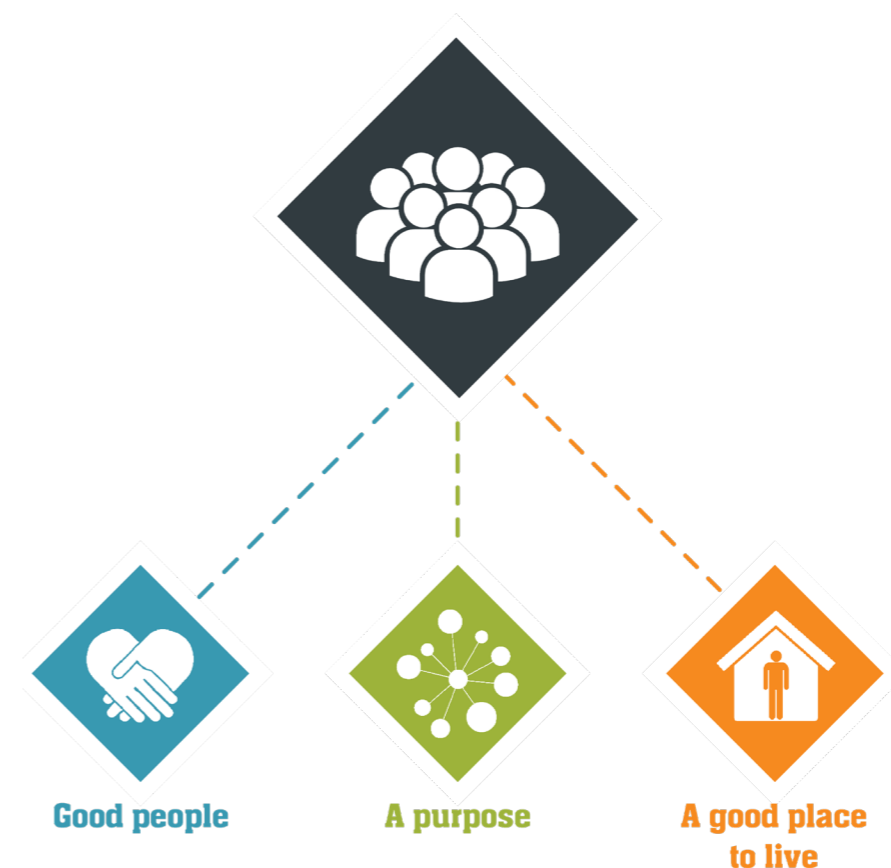
“Every five minutes a child runs away from home or care. They could be forced out, fleeing conflict or abuse, responding to peer pressure or being drawn into an exploitative relationship”

Our approach

Our experience tells us that people engage best with support that operates flexibly around their needs which is why we offer a responsive and needs-led service. We deliver interventions across the wider family to strengthen pull factors with the provision of preventative, specialist support, awareness raising and training.

We approach child exploitation (including county lines) and missing using the same model – and in fact we find that when these services are commissioned together, we’re able to have far more impact. We work with a range of partner agencies including police and children’s social care to reduce the risk of child exploitation, prevent further missing episodes, and stop any involvement in county lines. We have services based within Multi-Agency Safeguarding Hubs to respond quickly to children’s needs and work in a truly integrated way.

Our approach is guided by what we call our 3Ps. We believe that access to 3 basic things - a good place to live, good people around you and a purpose in life - is fundamental to transforming lives and communities.



“Everyone has a voice and it deserves to be heard no matter who you are, where you’re from or whatever you’ve been through.”

Catch22's 5-step model

Where Child Exploitation (CE) and Missing from Home services are commissioned together, we find they are more effective at identifying and managing risk as well as being more economically viable.

Our model rests on 5 key principles

Identifying CYP at Risk

Awareness and skills

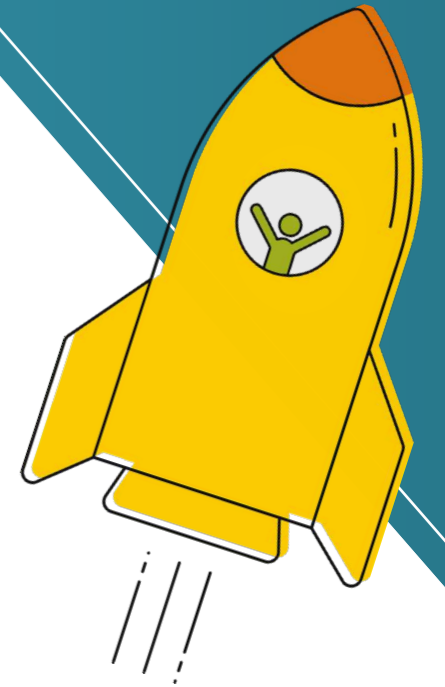
Volunteers

Bespoke Case Management System

Flexible and responsive to need

Support to prevent missing from home or care episodes from recurring includes return home interviews, CE screening and assessment, followed by programmes of direct work which enable young people to reflect upon and recognise the causes, signs and symptoms of CE.

Our key workers build holistic trusting relationships through individual and therapeutic support, group activities, and signposting to other services.



1

Identifying Children and Young People at Risk

We know C+YP are vulnerable to exploitation through both intra and extra familial contexts which can heighten risks whilst impacting on resilience. Therefore, we identify 'at risk' C+YP at the earliest opportunity, flagged by missing from home, care and education incidents to prioritise support, in addition to multi-agency risk assessment processes and broader referral pathways, including self-referrals for example.

2

Raising awareness and skills

We support workforce development through the provision of comprehensive training to the community inclusive of social workers, school staff, foster carers, parents, fire and rescue teams, health staff, youth provision, licensing departments and Universities. This includes training on the use of Local Authority CE screening tools. We raise awareness for young people through preventative and targeted workshops including the 8-week Futureproof programme in targeted schools, whilst also raising aspiration, resilience and confidence.

3

Recruiting and training model volunteers/mentors

We recruit, train, match and supervise a diverse range of Community Champion volunteers to ensure our services are accessible to marginalised groups and meet the needs of all sections of the community. We also provide Lived Experience Community Mentors to enhance support for high risk young people whilst maximising their engagement in a number of suitable interventions.

4

Using Case Management Systems to inform practice

We use a bespoke CMS, HALO, for recording and monitoring children and young people who go missing on more than one occasion. This has enabled us to target our resource for those most at risk.

We use the information to contribute to the identification of trends across Local Authority areas, which enables MACE panels, Police and Children's Social Care to take a proactive approach to the needs of children and young people. Catch22 staff also capture qualitative data such as Outcomes Star assessments, service user feedback, partner agency information and case studies.

5

Being flexible and responsive

We operate a flexible, responsive and holistic needs-led service, which includes:

- Direct Work 1:1, long-term trauma informed therapeutic interventions
- Bespoke Work for lower risk cases, supporting and upskilling professionals to deliver support
- Consultations for professionals, providing a resource toolbox and building workforce capacity
- Support for parents who can feel helpless, isolated and uncertain
- Contextual Safeguarding Approach to manage and reduce extra-familial risks effectively
- Solution focussed

methodology to underpin our strengths'-based approach

- "Reachable moments support" to CYP in custody suites, A+E, and as an Appropriate Adult to maximise opportunities to effective engagement
- Digital marketing and engagement tools to broaden our reach whilst offering choice.
- The use of Personal Scrapbooks which young people retain to capture the Voice of the Child.

Our youth forums ensure that services are co-created with young people – and that resources for publicising our services are developed by those who are likely to use them.

Examples of our work

Child Exploitation and Missing from home/care services

Merton Risk and Resilience

“My worker was always friendly and understanding, I felt like I wasn’t be judged so it made me free to speak. I think the most important thing was for me to have someone I could talk to and trust. I definitely felt safe talking to my worker.”

The Risk and Resilience Service is an integrated Substance Misuse, Exploitation, Missing from Home and Detached Youth Work service focused on mitigating risk and promoting resilience in young people.

The services aims reduce harm to young people aged 24 and under who are at serious risk of harm from, or are experiencing, or have been:

- Using Substances
- Reported Missing from home or care
- Exploited

In the last year:

- We worked with **633** individual young people
- **71%** of return to home interviews were conducted within 72 hours
- **82%** of young people leaving the service did so in a managed way

Pan-Merseyside

“My worker was so supportive and didn’t judge me, I didn’t feel like I was in trouble, and I know that what happened wasn’t my fault” [young person]

84% of young people state they feel safer after using the service

Catch22 currently delivers the Pan Merseyside Child Exploitation and Missing from home/care service across Merseyside on behalf of the Merseyside Police Crime Commissioners’ office, which also includes contracted CE/Missing services across Wirral, St Helens and Knowsley. We also provide support across Sefton and Liverpool as part of the broader contract.

We are embedded in the local Multi Agency Safeguarding Hub – meaning that cases are dealt with swiftly and with all the right professionals involved.

The model is proving hugely successful:

- **97%** of incidents were offered a return interview – with 64% completed and all of those completed within the 72-hour target
- **84%** of young people state they feel safer after using our service
- **88%** of young people report that they are getting along better with family member or friends
- **89%** of young people say they have better improved outcomes when it comes to drug and alcohol

Stoke and Staffordshire

“I’m really impressed. It’s a very passionate service which only has the best interest at heart in regard to supporting young people at risk of CSE, Missing and involved with gangs. I think the staff are so passionate, they care about the children and the growth and progress of the service. This is something that should be admired and imitated by other services” [Referral partner]

Each year we work with more than 1,200 children and young people who are subject to exploitation and/or who have gone missing from home. We also engage with nearly 1000 professionals through consultations, awareness raising workshops, meetings, promotional events, conferences, schools and training events.

We recruit volunteer mentors and lived experience champions who enable us to connect more effectively with certain communities of people that we sometimes find difficult to support.

The team constantly explore new ways to engage with its service users – including working with their Young People’s Forum to produce a series of brief TikTok style videos to promote our service directly to young people.

- **95%** of incidents were offered a return interview – with 87% completed and 84% of those completed within the 72-hour target
- **100%** of children and young people exiting the service have demonstrated positive improvements
- **100%** of mentors strongly agree that they have personally benefited from volunteering.

Derby and Derbyshire CARES (Children at Risk of Exploitation Service)

“Your work with a vulnerable 16 year old has been absolutely brilliant. The work is not only thorough and appropriately pitched but is also conducted in a non-confrontational and enabling manner. I feel strongly that such expertise should be recognised and wanted to pass on how impressed we are within Social Care.” [Social Care worker]

Delivered in partnership through Derbyshire OPCC, Derby City Council and Derbyshire County Council, our service has made quick progress in supporting high and medium risk children affected by child exploitation throughout 2020.

Following Catch22 intervention, Young People reported that:-

- **95%** felt safer
- **97%** had improved relationships
- **93%** had improved confidence and self-esteem
- **92%** improved education and learning

Coventry

“I want to compliment you for building such a good relationship with MB, so that he felt comfortable to disclose the contact with Child X, leading to him sharing the letter.” [Social Worker]

Our service in Coventry works with children and young people aged 9-18 and focuses on three key areas:

- Front line professionals and community awareness training on child exploitation and county lines.
- Prevention activity delivered in schools in the targeted areas, which includes primary and secondary
- Intervention activity, using a whole family approach, targeting families in high-risk areas using risk characteristics

In the last year:

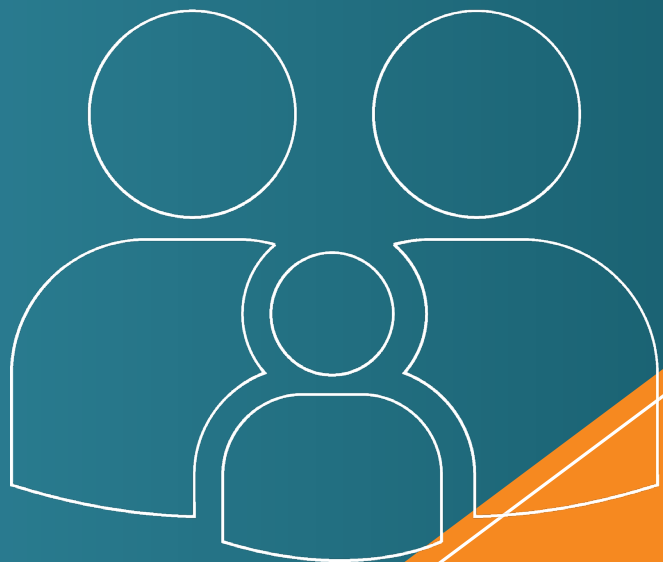
- **65%** of young people engaged with the service had a reduction in risk—with some even dropping from a high-risk level to low following successful intervention
- **21** Professionals training sessions were held, with a total of 284 professionals attending



CONTACT US

If you're interested in finding out more about our Risk and Resilience services, or want to work with us, please contact:

ypf@catch-22.org.uk



**catch
22**